

# The Tabernacle

A lesson from the Old Testament is on the Jewish Tabernacle during the time of Moses.

*By Pastor Paul C. Tidwell Sr.  
Inspired Word Christian Fellowship*



## Lesson One

### Introduction

The study of the Tabernacle is a thrilling story: **GOD'S DESIRE TO DWELL WITH MAN, and TO BRING REDEMPTION TO MAN.**

#### THE TABERNACLE WAS:

- [1]. The dwelling place of God in Israel (in the Wilderness and Canaan).
- [2]. A picture of the Lord Jesus Christ, and God's salvation in Him.

#### WHY STUDY?

There are 50 chapters in the Bible on The Tabernacle:

- [1]. The TABERNACLE and the Tabernacle FORM OF WORSHIP are FIGURES of that which was to come (Heb 9:8,9,24; 10:1); God's future plans.
- [2]. The TABERNACLE and EXPERIENCES OF THE ISRAELITES were EXAMPLES and PATTERNS established by God for us (1 Cor 10:11; Heb 8:5).
- [3]. The TABERNACLE pictures THE LORD JESUS CHRIST in such perfect detail that it thrills the believer as the study unfolds (Lk 24:27) Every detail of the

Tabernacle points to some aspect of the person and work of the Lord Jesus Christ (John 1:14).

## I. THE TABERNACLE The Dwelling Place of God.

The word 'tabernacle' means "temporary dwelling place":

[1]. THE TABERNACLE OF THE O.T. was temporary - used only 400 years (Ex 25:8).

[2]. Then, THE TEMPLE (2 Chr 5:14) was for a time the dwelling place of God here on the earth, (will be restored for the Millennium).

[3]. While JESUS was on the earth during His ministry, He was the dwelling place of God, in whom all the fullness of the Godhead dwelt bodily (Col 2:9).

[4]. After which Christ took up abode in THE HEART OF THE BELIEVER (1 Cor 3:16). The word CHURCH means "that which is called out", and does not apply to the building, but the BELIEVERS. Therefore, the Tabernacle is also a picture of the believer, the place where Christ dwells. The Believer ("in Christ") is the dwelling place, the temple of God (Holy Spirit); the body is the outer court, the soul is the holy place, and the spirit is the holy of holies.

[5]. Finally, IN HEAVEN (He 8:1,2; 9:23, 24; Rev 11:19; 21:3).

## II. THE TABERNACLE TELLS MORE THE COMPLETE PICTURE OF SALVATION

The Tabernacle is a picture of the Lord Jesus Christ, and a picture of the believer "in Christ", and also a complete picture of the PLAN OF SALVATION. In

God's redemption there are seven steps:

[1]. As sinners on the outside, we must first ENTER and STOP at the ALTAR (the cross).

[2]. Next comes SEPARATION and DAILY CLEANSING at the LAVER.

[3]. We enter into FELLOWSHIP of the Lord at the TABLE.

[4]. We learn to WALK in the LIGHT of the Golden CANDLESTICK.

[5]. Then, and only then, comes POWER in PRAYER at the TABLE OF INCENSE.

[6]. We are then ready to enter the HOLY OF HOLIES of HIGHEST SERVICE (the personal power and communion of the Holy Spirit).

[7]. There, we reach PERFECT REST and PEACE at the blood-sprinkled MERCY SEAT under the shadow of the cherubim.

THE SUBJECT OF THE TABERNACLE IS INEXHAUSTIBLE, and as we permit the Holy Spirit to help us to understand these truths, we are then to be drawn closer to the Lord Jesus, and by knowing more about Him from this study, we

will love Him more, and in loving Him more we will serve Him more. STUDY THEN SHOULD RESULT IN LOVING SERVICE!!!!

III. THE TABERNACLE PATTERN Three fold Division - the number of divine perfection (John 14:6).

- [1]. THE OUTER COURT - The fence, the brazen altar, the laver.
- [2]. THE HOLY PLACE - The table of shewbread, the candlestick, the altar of incense.
- [3]. THE HOLY OF HOLIES - The ark and the mercy seat.

#### IV. THE FOURTEEN MATERIALS

Fourteen is the number of TESTIMONY. The Tabernacle is a place of fellowship, communion, and TESTIMONY. Each material has a typical meaning, the meanings are the same wherever they are found in the Tabernacle. Christ is seen in them all:

- [1]. GOLD - Deity (Ex. 25:3).
- [2]. SILVER - Redemption (Ex 25:3).
- [3]. BRASS - Judgment (Ex 25:3; Num 21:6-9).
- [4]. BLUE - Heavenly nature and origin (Ex. 25:4).
- [5]. PURPLE - Royalty (Ex 25:4).
- [6]. SCARLET - Sacrificed blood (Ex 25:4).
- [7]. FINE LINEN - Spotless righteousness (Ex 25:4; Rev 19:8).
- [8]. GOAT'S HAIR - The sinbearer (Ex 25:4; Lev 16:20-22).
- [9]. RAM'S SKINS DYED RED - The suffering of Christ, the depth and devotion of Christ (Ex 25:5 Luke 22:44).
- [10]. BADGER'S SKINS - Humility of Christ (Ex 25:5; Isa 53:2), a common, ordinary-looking skin.
- [11]. SHITTIM WOOD (Acacia) - Humanity of Christ (Ex. 25:5).
- [12]. OIL for the LIGHT - The Holy Spirit (Ex 25:5).
- [13]. SPICES for Anointing, OIL - Sweetness and preciousness of Christ (Ex 25:6).
- [14]. ONXY STONES - Speaks of the Glory of Christ (Ex 25:7; John 17:5).

#### V. SEVEN ARTICLES OF FURNITURE

Seven is the number of perfection: ARK, MERCY SEAT, ALTAR OF INCENSE, TABLE OF SHEWBREAD, CANDLESTICK, LAVER, BRAZEN ALTAR

## VI. "THE HOUSE OF BLOOD"

THE TABERNACLE has been called "**THE HOUSE OF BLOOD**" (Lesson 4), because of the blood of the sacrifices required by God. But, all of this blood was merely prophetic, typical, and a shadow of the blood of the coming Lamb of God, His Son:

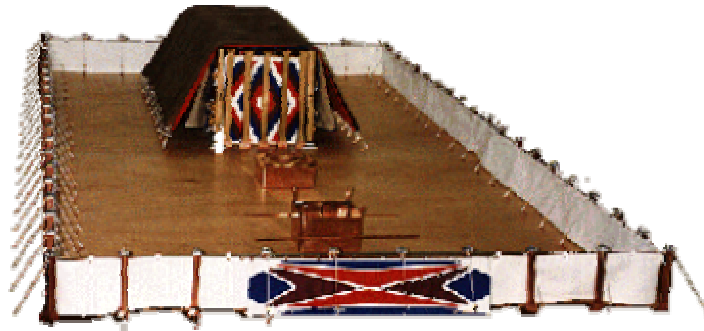
- [1]. We have redemption through the blood (Eph 1:7).
- [2]. We have forgiveness through the blood (Eph 1:7).
- [3]. We have justification through the blood (Rom 5:9).
- [4]. We have sanctification through the blood (Heb 10:10).
- [5]. We have cleansing through the blood (I John 1:7).
- [6]. We have peace through the blood (Col 1:20).
- [7]. We have victory through the blood (Rev 12:11).

## Lesson Two

### THE FENCE AND THE OUTER COURT

Exodus 26; 27:9- 18; 38:9-20

**"WHOSOEVER WILL MAY COME"**



The most costly building, for its size, ever erected, was the **TABERNACLE**

[1]. It was only 15 ft. wide, 45 ft. long, 15 ft. high (675 sq. ft. of floor space, only two rooms).

[2]. The cost of materials was over \$10,000,000.00 (not counting labor).

[3]. It stood **WITHIN A COURT** which was the size of an average city lot (75 x 150): and was enclosed by a **FENCE** (7 1/2 ft. high).

#### I. THE TABERNACLE WAS ALWAYS IN THE CENTER OF THE CAMP

A. See **"The Camp"** in the Introduction pictures, diagrams.

[1]. God is, and always has been, the **GOD OF ORDER** (Tribes around Tabernacle).

[2]. The beauty and significance of this arrangement is **GOD IS THEIR "CHIEF"** (as the Bedouin camps in the desert).

[3]. The **CENTER**, then was a **PLACE OF SAFETY** (Psalms 91).

B. **The TABERNACLE** Always faced EAST - looking toward the SUNRISE (Matt. 24:27).

[1]. It is not suggested by tints that our churches face East today, but our hearts should!

[2]. The Tabernacle floor was sand - all the beauty was up (Col. 3:2 ) church is also in the wilderness.

[3]. The temple floor was gold (I Kings 6:30) (speaking of Christ on earth during the millennium).

## II. THE MATERIALS OF THE FENCE

The **FENCE** was of **FINE, TWINED LINEN** suspended on sixty pillars (posts) of brass resting on sockets of brass, capped with chapiters (crowns of silver), held in place with linen cords and pins of brass.

A. One of the more prominent materials - (fence, gate, door, veil, covering).

[1]. Approximately 6,000 sq. ft. used in the Tabernacle and priest robes.

[2]. Linen suggested two things:

(a). The righteousness of God (Heb. 7:26; Rev. 19:8).

(b). "Good Works" of the saved (Eph. 2: 10)

Both thoughts are Joined in (Is. 61:10).

[3]. What a wonderful exhibition of **RIGHTEOUSNESS**.

[4]. How the **LINEN FENCE** must have stood out in **CONTRAST** to the hundreds of **BLACK TENTS** (Solomon 1:5) pitched around it - Christ's **RIGHTEOUSNESS** in a perverse and crooked generation (Deut. 32:5; Phil. 2:15).

## B. THE HARVEST OF LINEN

[1]. For seven years the soil is prepared before the flax seed is sown for this high grade, finely twined linen (other crops are raised and plowed back into the soil - this is the work of the Holy Spirit preparing our hearts to receive the Word (seed) of God.

[2]. The special seed is sown (flax will grow anywhere, in contrast to cotton or silk: God's righteousness is universally available). (The blood of Christ can meet the needs of any sinner anywhere).

[3]. Harvesting is done by hand, (flax has been sown closely together ) to preserve the fine texture (individual salvation) and laid in pools of water for the flax plant to die and the linen fibers to "come alive-separated" (baptism of the believer).

[4]. Cleansing and combing come next, much rough treatment, but many short hairy bits are removed (testing, trials).

[5]. Finer, and finer combing brings soft, silky finish (Rom. 5:3-51).

[6]. Spun into thread, wetted and spread in the sun to bleach. (1 Pet. 1:6-7).

## C. THE PILLARS - (posts)

Sixty in number, made of brass sockets, silver chapiters.

- [1]. 60 - composed of five twelves.
- [2]. 100 cubits long.
- [3]. 50 cubits wide (Lev. 25:5-17).
- [4]. Brass - divine judgment - Christ took the divine judgment of sin for us (2 Cor. 5:21).
- [5]. The **CHAPITERS of SILVER** (Ex. 30:11-16). Silver is descriptive of **REDEMPTION**, although condemned and deserving of death, the believer has been judged and redeemed in Christ's death.

### III. THE PURPOSE OF THE FENCE

The Fence was continuous, except for the One Gate in front.

- A. It was a BARRIER - Unlawful entrance is prevented.
- B. It was PROTECTION - Kept enemies of righteousness at a distance, but inside you are surrounded by righteousness.
- C. It was a LINE - The camp outside, the Tabernacle inside; a positive mark (righteousness) separating the Church and the World.
- D. It was a WAY OF APPROACH - man must come God's way, God's provided way in Christ.

### IV. THE GATE

There was only **ONE OPENING** in the **FENCE - THE GATE**

- A. THREE ENTRANCES - Gate, Door, Veil -
  - [1]. **VEIL** - Downward from God.
  - [2]. **DOOR** - Outward from God to man.
  - [3]. **GATE** - Upward from man to God.
  - [4]. **ALL THREE** equal in size - 100 cubits square; Gate (5x20); Door, Veil (10x10).
  - [5]. **EXTRA WIDE** - WHOSOEVER WILL.

## B. DESCRIPTION OF THE GATE

- [1]. 20 cubits wide, 5 cubits high, supported on 4 pillars.
- [2]. Fine twined linen embroidered with blue, purple and scarlet.
- [3]. **BLUE** - Heavenly origin, nature (**JOHN** - Son of God).
- [4]. **PURPLE** - Royalty (**MATTHEW** - King of the Jews).
- [5]. **SCARLET** - Sacrifice, death (**MARK** - suffering servant).
- [6]. **LINEN** - Righteousness (**LUKE** - (Perfect) Son of Man).
- [7]. **FOUR PILLARS** - (North, East, South, West) - **The WORLD NUMBER** (three openings in pillars - The **WAY**, The **TRUTH**, The **LIFE**).

## C. SIGNIFICANCE OF THE GATE

- [1]. It was an **ONLY GATE** - One way (Acts 4:12).
- [2]. It was a **WIDE GATE** - "Whosoever will" (Rom. 10:13).
- [3]. It was an **ACCESSIBLE GATE** - No locks, no bars, (no cherubims).
- [4]. It was an **ATTRACTIVE GATE** - A beautiful blend of colors.
- [5]. It was a **WELL SUPPORTED GATE** - Holding forth God's righteous demands.

**THE GATE** is the **FIRST STEP TO GOD**: "**WHOSOEVER WILL MAY COME**"

## **MULTIPLES OF FIVE IN THE MEASUREMENTS**

A large number of the measurements are multiples of fives. What does this mean? **FIVE** is the number of Death!

### **THE COURT:**

60 pillars (12x5)

60 chapters (12x5)

60 sockets (12x5)

20 pins (24x5)

100 cubits long (20x5)

### **THE ENTRANCE:**

Gate 20 cubits wide  
(4x5)

Gate 5 cubits high  
(1x5)

Door 10 cubits wide  
(2x5)

Door 10 cubits wide  
(2x5)

Door 5 pillars (1x5)

**THE TABERNACLE:**

30 cubits long (6x5)

10 cubits wide (2x5)

10 cubits wide (2x5)

100 silver sockets  
(20x5)

15 bars (3x5)

5 bars each side (1x5)

10 curtains (2x5)

50 taches (10x5)

100 blue loops (20x5)

**HOLY OF HOLIES:**

10 x 10 x 10 (2x5)

**BRAZEN ALTAR:**

5 x 5 cubits (1x5)

5 vessels (1x5)

5 animals (1x5)

5 offerings (1x5)

**In the Ark:**10 commandments  
(2x5)**HOLY PLACE:**

20 cubits long (4x5)

10 cubits wide (2x5)

10 cubits high (2x5)

**ESTIMATED VALUE (Exodus 38:24-31)**

With the change in monetary values, it is difficult to accurately evaluate the Tabernacle. However, the Scriptural listing was: GOLD 29 talents 730 shekels = 1 1/4 tons SILVER 100 talents 1,775 shekels = 4 1/4 tons BRASS 70 talents 2,400 shekels = 4 tons

A talent of gold was about 120 pounds, a talent of silver about 100 pounds, a shekel was one-half ounce.

Adding to this the cost of the wood, fabrics, priestly garments, precious stones, it has been estimated to be valued at \$10,000,000.00 without labor.

Where did they get this wealth? (Exodus 12:35,36)

# Lesson Three

## THE BRAZEN ALTAR, THE LAVER (Exodus 27:1-8; 30:17-21)

### THE TABERNACLE HAD SEVEN ARTICLES OF FURNITURE:

**TWO IN THE COURT** - Brazen Altar, Laver.

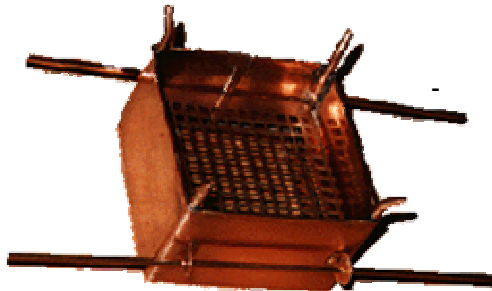
**THREE IN THE HOLY PLACE** - Table of Showbread, Candlestick, Altar of Incense.

**TWO IN THE HOLY OF HOLIES** - Ark, and Mercy Seat.

**SEVEN** - The number of **PERFECTION** (perfect provision for believers). After we enter the Gate, there are **SEVEN STEPS** to the full and complete life of victory in Christ:

- [1]. Brazen Altar - a picture of the cross (conversion).
- [2]. Laver - Cleansing from sin (Separation, Daily Cleansing).
- [3]. Table of Showbread - The place of fellowship, to be fed on Christ and the Word (Bible Reading).
- [4]. Candlestick (or Lampstand) - The testimony of believers is nourished by the oil of the Holy Spirit testimony.
- [5]. Altar of Incense - Prayer and Intercession of believers.
- [6]. Ark - Full surrender of the believer (Surrender, Prayer).
- [7]. Mercy Seat - Completer victory, rest and peace (Victory).

### I. THE BRAZEN ALTAR



The Shadow of the

Cross. "**ALTAR**" means 'to lift up' - The cross was a 'lifted up altar' (John 3:14; 12:32). It also means: "slaughter place", the place of sacrifice (Heb. 9:26; 10:4-12).

#### A. THE MATERIALS -

Made of shittim (acacia) wood, overlaid with brass, four horns, two staves, a grate, etc.

The only timber that could grow in the desert; was called 'incorruptible' wood because it was so enduring. It speaks for the incorruptible "without sin **HUMANITY OF CHRIST.**

Brass - (refers to judgment). Speaks of the **DEITY OF JESUS**, and as **SON OF GOD** he could endure that awful heat of God's judgment on sin. Christ is seen in **THE ALTAR**, and in **THE SACRIFICE.**

## **B. THE SIZE AND DESIGN**

Five by Five by Three cubits - The largest article of furniture.

All other articles could be put within its size - every future blessing for the believer is within the fold of Calvary.

Five cubits square - The number of death and grace, salvation is all of grace.

Foursquare - equal for all men "there is no difference".

Three cubits high - God's acceptance of Christ's sacrifice by raising him from the dead after three days.

Four horns - Horns were peculiar only to the altars of Israel.

The four corners of the earth (all men invited).

The sacrifices were bound to the horns because they were not willing (Rom. 12:1-2). Love bound Jesus to the cross, not nails (John 10:18).

## **C. POSITION**

Just within the Gate, accessible, unavoidable, stood at the "gate of repentance" (repentance is not salvation).

When a sinner comes to the place he realizes he is a sinner, he must not only have sorrow for sin and willing to turn his back on it, but come to the cross.

## **D. PURPOSE**

Upon the Brazen Altar the sacrifices were offered and consumed by fire.

See what the Law demanded (Ex. 20:24-26).

"The grate" was a network of brass (twisted or plaited) about half way down inside, under the "compass" or shelf around the top.

## E. USE OF THE NUMBER FIVE

[1]. **FIVE UTENSILS** (sin reduced to ashes).  
**PANS**, used to hold ashes.

**SHOVELS**, for picking up the ashes.

**BASINS**, hold the blood sacrifices (sometimes carried inside the tabernacle, sometimes poured out at the foot of the altar).

**FLESHHOOKS**, to arrange the sacrifice on the altar.

**FIREPANS**, or censers, to carry the fire to the altar.

[2]. **FIVE ANIMALS** as sacrifices -

**LAMB, BULLOCK, GOAT, HEIFER, TURTLE DOVE.**

[3]. **FIVE OFFERINGS** (from Leviticus): **BURNT, MEAL, PEACE, SIN, TRESPASS.**

## F. OTHER DETAILS

[1]. **ASHES** - Were not to be destroyed, but taken to a clean place (Lev. 6:10,11) and were used later in cleansing from defilement (Num. 19). They were evidence that the sacrifice was wholly consumed by fire.

Here is a picture of Christ's body taken from the cross, and placed in a new tomb (clean place), but rose to cleanse sinners.

[2]. **BLOOD** - Was not to be used, but poured out at the bottom of the altar or sprinkled on the altar.

It was the 2nd evidence that the sacrifice had been made.

When Christ gave his life, He gave His all.

[3]. **STAVES AND RINGS** - The altar was portable, carried by two staves in four rings. The cross is to be carried throughout the wilderness of the world.

**TWO STAVES** - The two parts of the gospel (the death and resurrection), takes both to carry (tell) the story of the Gospel.

## II. THE BRAZEN LAVER



The Wash Basin (after salvation comes cleansing).

### A. SIZE AND SHAPE -

The size and shape not given, signifying the unlimited daily cleansing in Christ; "his foot" on the base under the bowl.

The cleansing was not done IN the Laver, but AT the Laver, using water kept there (how water was poured out not told, spouts (?), etc.).

### C. POSITION -

It stood between the Brazen Altar and the Tabernacle - a position of significance in what it portrays (the order is set, not changing).

Daily cleansing follows the cross (not before).

The priests washed their hands and feet at the Laver continually as they ministered at the Tabernacle (no floor in the Tabernacle, nor chair for sitting, priests on their feet constantly and in contact with defilement of the earth), Hands speak of service, feet speak of conduct and walk.

### D. ORIGIN -

The Laver was made from brass.

It was given as FREE-WILL OFFERINGS, but what are the gifts unless they cost us something (would these be a sacrifice?).

### E. WATER -

For the **WORD** and the **WORK OF THE HOLY SPIRIT**.

The Word is our looking glass; from it God shows us the things in our lives that are not pleasing to Him; we need daily cleansing.

The Word reveals more:

See (James 1:23-25) being doers as well as hearers.

Solemn warning - (Exodus 30:21).

**WASHED AND CLEAN FOR SERVICE!**

## Lesson Four

### THE TABERNACLE ITSELF. **THE HOUSE OF BLOOD** (EXODUS 26:15-30)

**THE TABERNACLE** was God's dwelling place in the Old Testament, and the Church (or the Believers) in the New Testament are God's dwelling place (Eph. 2: 19-22).

[1]. The Tabernacle, then, is a picture of what God intends for the Church and **US TO BE**.

[2]. God gave every detail for the construction:

[3]. Supreme Architect - God (Ex. 25:9).

[4]. General Contractor - Moses (Ex. 25: 1).

[5]. Foreman - Bezaleel (Ex. 31:2-5; 35:30-33; 36-38).

[6]. Assistant Forman - Aholiab (Ex. 31:6; 35:34,35; 36-38)

#### **THE TABERNACLE FRAMEWORK** -

[1]. It was oblong in shape; 10 cubits wide, 10 cubits high, 30 cubits long (15'x 15'x 45').

[2]. **48 BOARDS**; each 10 cubits high and 1 1/2 cubits wide.

[3]. **96 SOCKETS** (two under each board).

[4]. **15 BARS** (five on each of the two sides, and on the back).

[5]. 2 sets of **PILLARS** (one with four, and one with fine).

[6]. 4 sets of **CURTAINS** and **COVERINGS**.

#### 1. **SILVER SOCKETS**

(Ex. 38:25-38; 30:11-16; Matt. 17:24-27; I Pet. 1:18,19).

**ALL** of the Materials of the Tabernacle were given as **FREEWILL OFFERINGS** by a **WILLING PEOPLE**, with the one exception - the **SILVER**:

[1]. **REQUIRED** by God when the tribes were numbered.

[2]. **RANSOM** (not tax or levy... that there be no plague" (Ex. 30:12).

[3]. Not a plague because they numbered the tribes, for there had been no

prohibition to this as yet; but, lest **PRIDE** in dependence on numbers instead of God.

A. **WHY SILVER?** - Men were bought and sold for silver.

- [1]. Joseph for 20 pieces, and Jesus for 30 pieces.
- [2]. **CHRIST** is seen in the use of silver for sockets.

B. **GOD FIXED THE PRICE** - (half a shekel).

- [1]. God set the price, so no questions of the personal opinion of men.
- [2]. All men are equal (rich not to give more, nor the poor give less).
- [3]. God's condition of salvation for all is **FAITH IN CHRIST** (equal price for all).

C. **AMOUNT OF SILVER** - half a shekel (quarter of an ounce in weight).

- [1]. 603,550 men over 20 (plus the Levites).
- [2]. Equals to 100 sockets weighing 125 pounds each, and then more:
- [3]. 96 sockets (two each under the 48 boards).
- [4]. 4 sockets under the four pillars holding the veil before the Holy of Holies.
- [5]. Balance used for fillets or hooks, and chapiters.

D. **SILVER FOUNDATION** - (I Cor. 3: 11)

- [1]. There could be no Tabernacle (Church or Believers) without a **FOUNDATION** (the redemption of Christ).
- [2]. Two sockets under one Board (Deut. 19: 15),
- [3]. The Law of Two Witnesses (I Jn. 5: 10).
- [4]. Two tenons (or feet) on Boards to fit into Sockets,
- [5]. Both set on the silver, not one on silver and the other on sand (the world, or the things of the world).

E. **"FORMED AND THEE"** - MATT. 17:27

- [1]. "Piece" was enough for Peter and Jesus.
- [2]. Jesus paid for Peter as well as Himself; and His blood is enough for all men.
- [3]. **THE SUFFICIENT BLOOD OF CHRIST**, what a glorious foundation for the Church.

II. **THE BOARDS** - (Ex. 26:15-29; 36:20-34).

The walls of the Tabernacle were **WOOD** overlaid with **GOLD**, **STANDING** in silver sockets.

- [1]. **SOCKETS** - Type of redemptive work of Christ, the blood is the foundation.  
[2]. **BOARDS** - Standing, the believers resting on finished work of the cross.

A. **MADE OF SHITTIM WOOD** -

- [1]. Native of Sinai desert, a tree drawing strength from the earth.  
[2]. A picture of the unsaved in the barren world.

B. **WERE CUT DOWN**

- [1]. Connection with earth was severed symbolizing the severance from the old life at salvation.  
[2]. Believers were once in the world until cut off by Christ from the world.

C. **WERE STRIPPED**

- [1]. Knots and branches were cut off, nothing straight about Shittim.  
[2]. Cut until straight! What a suggestion!

D. **OVERLAID WITH GOLD** - (2 Pet. 1:4)

- [1]. Wood is type for Humanity (perishable).  
[2]. Gold is type for Divinity (imperishable).  
[3]. Imperfections covered over by the righteousness of Christ.  
[4]. When we become useful to God after salvation, we will discover that we are different from what we formerly were.

E. **"STANDING UP"** - How impressive!

- [1]. Not sitting at ease, or reclining in indifference.  
[2]. Standing on silver, not on sand (these Boards - wood overlaid with gold - also portray the Lord Jesus as the God - Man).

### III. **RINGS AND BARS**

Important in the construction of the Tabernacle were the **RINGS AND BARS**:

A. **THREE RINGS** - of gold in each Board to hold Bars.

- [1]. The Father, the Son, and the Holy Spirit working for and on our behalf (Rom. 8:26,31,34).  
[2]. The grace of the Lord Jesus Christ, the love of God, and the fellowship of the Spirit.

## B. FIFTEEN BARS

[1]. Five each on the two sides, and on the back.

[2]. **THE FIVE GIFTS OF THE MINISTRY** in the Church seen here (Eph. 4: 11,12-16). **PASTORS, TEACHERS, EVANGELISTS, APOSTLES, PROPHETS.**

[A]. **APOSTLES AND PROPHETS** (EPH. 3:20)

[a]. Not as foundation of faith, but foundation not beginning of ministry.

[B]. **EVANGELISTS**

[a]. Wide, far reaching work.

[C]. **PASTORS AND TEACHERS**

[a]. To shepherd the flock, and to instruct. **BARS** kept the sides rigid, held up against the winds ("winds of doctrine"). Without this **GOD-GIVEN MINISTRY**, the flock would be scattered.

## C. PINS AND CORDS

The Tabernacle, though portable and constructed without nails, screws, hinges, glue, or supports, was sturdy and stood against the howling storms for 40 years.

[1]. The winds blew, the storms swept, the rains beat - but it stood.

[2]. The most secure place in the camp of Israel, was the Tabernacle (thus David writes Ps. 91:1,2,7,9).

**CORDS of LINEN** - The love of Christ in His death and resurrection.

**PINS of BRASS** - Judgment (complete) - **THUS, WE ARE ETERNALLY SECURE IN SALVATION.**

**THERE IS SAFETY UNDER THE BLOOD!!**

## Lesson Five

### THE COVERINGS AND THE CURTAINS, DOOR, VEIL (Exodus 26: 1-37)



Over the Tabernacle were **FOUR LAYERS** for the **ROOF**:  
Two Outer **COVERINGS**: Badger skins, Ram's skins.  
Two Inner **CURTAINS**: Goat's hair, Fine twined linen.

#### I. THE TWO SETS OF COVERINGS

A. **First Covering** - **BADGER SKINS** (dull, bluish gray).

[1]. One verse is all that is given for the coverings (Ex. 26:14).

[2]. These skins protected the Tabernacle from the rain, sand, and sun.

[3]. Weather-beaten, dull and bluish-gray, it was unattractive, no beauty was in it (this was all that could be seen from the courtside).

[4]. **HERE IS CHRIST** (in His **HUMILIATION**)

[5]. The "covering" of Christ is for all who will put their trust in Him.

[6]. Isaiah 53:2,3 - "no form, no comeliness, no beauty".

[7]. What does the world see in Jesus today?

B. **Second Covering** - **RAMS SKINS** (dyed red).

[1]. Mentioned in same verse with badger skins (26:14).

[2]. The ram was the animal for sacrifice; also used in the consecration of the priests.

[3]. **HERE IS CHRIST** (as the **SUBSTITUTE** - **SACRIFICE** - **HIS BLOOD**).

#### II. THE TWO SETS OF CURTAINS

A. **First Curtain** - **GOAT'S HAIR** (black - Exodus 26:7-13).

[1]. Also called the Tent".

[2]. It actually was a set of (11) curtains joined together in two pieces (5 & 6), and the two pieces joined by **FIFTY BRASS TACHES** and **ONE HUNDRED LOOPS**.

[3]. **HERE IS CHRIST** (the **SIN-BEARER**).

[4]. The goat was used as a sin offering (Lev.9,16); and the Palestinian goat was black (Gen. 30:25-43) depicting the blackness of sin.

[5]. Christ as the sin offering was judged (brass) and accepted by God.

[6]. 10 of the 11 sections were covered by the two outer coverings, the 11th was hanging and seen. The meaning of number **ELEVEN: ELEVEN IS THE NUMBER OF DISORGANIZATION** - Christ's life on the earth was 33 years ( 11 periods of 3 years each), the first 10 were obscure (30 years), and the 11th was His public ministry of 3 years.

Joseph (Gen. 37) dreamed of eleven stars (brothers), then sold by his brothers, family left disorganized; 11 apostles (instead of 12) after the Passover, disorganized until Pentecost.

**B. Second Curtain** - **FINE TWINED LINEN** (white, Ex.26:1-6).

[1]. 10 curtains sewn together in two sets of five, joined by 100 **LOOPS OF BLUE** and **50 GOLDEN TACHES**.

[2]. Woven (cunningly, skillfully worked with **BLUE, SCARLET, PURPLE,** and **CHERUBIMS**.

[3]. **HERE IS CHRIST** (**RIGHTEOUS, HEAVENLY, ROYAL, SACRIFICIAL**).

(a). **LINEN** - spotless, sinless, righteous (The Person and Work of Christ). (see Lesson 2 for the significance and meaning of the use of linen).

(b). **BLUE** - The color of His Heavenly origin, His deity - **SON OF GOD**.

(c). **PURPLE** - His royalty, mixing of blue and scarlet - the **GOD-MAN**, the King of the Jews, the King of Kings.

(d). **SCARLET** - The sacrifice and death of Christ, the work of the Cross. (Color: possible way they obtained: Scarlet was from the bodies of cochineal (insect) baked in ovens; Purple from shellfish in the Mediterranean; Blue from shell of fish in the Red Sea. All picture **SUFFERING, SACRIFICE**).

(e). **CHERUBIM** - of gold, expressing **HOLINESS**, above the Mercy Seat and on the Veil, guarding the place of God (Gen. 3:24), barring any from God's presence unless they came by His provided way.

(f). **GOLD TACHES, BLUE LOOPS** - (making one perfect whole curtain) - the loops take hold of each other here (while in Goat's Hair the brass taches link the loops, thus the golden taches become a double security).

(g). **THE NUMBER - TEN** (two sets of **FIVE**): **TWO** - (number of division).

[1]. **FIFTY** - The number of Pentecost (Lev. 23:15, 16; Acts 2:1).

[2]. The fifty loops rested over the golden fillet that held the Veil, and we can see the Holy Spirit descending upon and filling the disciples (pillars).

### III. THE DOOR AND VEIL

#### A. THE DOOR- (Exodus 26:36,37)

[1]. Colors same as the Gate (see Lesson # 2), hanging on **FIVE PILLARS** (shittim wood overlaid with gold, with brass sockets and gold chapters).

[2]. The Gate is **WIDE** (5 cubits by 20 cubits) - "Whosoever will may come".

[3]. The door is **NOT SO WIDE** (10 cubits square) - The way of salvation is wide, but the door to close fellowship is narrow (higher) and nearer to God (the high and Holy character of God).

[4]. **CHRIST IS THE DOOR** (John 10:7)

#### B. THE VEIL - (Exodus 26:31,33)

[1]. Same color as Gate, Door; hanging on wood overlaid with gold, gold fillets, silver sockets.

[2]. Veil means "separated", communion with God was only in the Holy of Holies, behind the veil.

#### SIX VEILS IN SCRIPTURE:

(1). **TABERNACLE** - Built by Moses and the Israelites.

(2). **OF MOSES** - (Exodus 34:33-35) It concealed God's glory from mortal eyes.

(3). **TEMPLE** - Built by Solomon

(4). **OF CHRIST'S FLESH** (Heb. 10: 19,20) - Human flesh hid the inner glory of the Son.

(5). **OF UNBELIEF** (2 Cor. 3: 13-16) - They read the law but could not discern.

(6). **NATIONAL BLINDNESS** (Is. 25:7-9; Rom. 11:25) - of Israel.

**FOUR PILLARS** - The four gospel writers: MATTHEW, MARK, LUKE, AND JOHN.

[1]. Five on the Door, N.T. writers: Paul, James, John, Peter, Jude.

**CHERUBIMS** - emblem of guardianship, man alone cannot approach God.

**SILVER SOCKETS** - redemption is the foundation of Christ's work on the cross.

**GOLDEN FILLETS** - God's hand was ever on His Son.

**VEIL RENT IN TWAIN WHEN CHRIST DIED** Matt. 27:51)

[1]. Divinely Rent - From top to bottom, beyond man's reach.

[2]. "In the midst" - Before all men, not secret.

[3]. Completely - Not a thread left, we can come boldly, obtain mercy and find grace (Heb. 4:16).

#### C. CLOSING NOTE: **BADGER SKINS** (Ezek. 16: 10) were used for **SHOE LEATHER**.

[1]. Where did they get badger skins in desert of Sinai? They literally gave their shoe-leather (off their feet- .?) for service to God.

[2]. **ONE PAIR OF SHOES FOR 40 YEARS** (Deut. 8:4; 29:5; Neh. 9:21)

## **Lesson Six**

### **THE FURNITURE WITHIN THE HOLY PLACE**

(Exodus 25,27,30,37)

We should never cease to **MARVEL** at the **WONDERS OF OUR SALVATION**.

[1]. At the Brazen Altar - **FORGIVEN**; At the Laver - **CLEANSED**.

[2]. All this was accomplished on the **CROSS**.

There are **OTHER PRECIOUS PRIVILEGES** available to us through the **PRESENT MINISTRY OF CHRIST**.

[1]. To know these, the believer must enter the **DOOR** that leads from the **OUTER COURT** into the **HOLY PLACE**.

[2]. This **REQUIRES** a definite act of **FAITH** as was required to enter the **GATE**, and many Christians have not taken this **SECOND STEP**.

(a). A saved person in the **COURT** sometimes thinks that it is so wonderful what more should he want (it is glorious Just to be saved, but what more glorious to enter into sweet fellowship with Christ).

(b). The Tabernacle is not seen **UNTIL INSIDE**.

[3]. To grow a Christian must enter, we cannot hold fellowship with the world and enter at the same time; we cannot take the world with us, we cannot know the joys of the yielded life until fully consecrated. **WITH REVERENT HEARTS** we enter the **SACRED PLACES** reserved for **PRIESTS UNTO GOD** (Heb. 9:23-28; I Pet. 9) (the believers) as seen in the **THREE PIECES OF FURNITURE** (Rev. 1:5,6).

#### **I. [THE TABLE OF SHEWBREAD](#) - (North) (Ex. 25:23-30; 31: 18; 37:10-16).**

**FELLOWSHIP** - in **CHRIST** is seen here. The Lord desires to have fellowship with us, and more - that we know Him better, so He has provided a table for us to come around - this is His invitation to the believer to commune with Him by feasting upon the Bread of Life (John 6:35).

We can do this by feasting on the **WRITTEN WORD**, both in private and public Bible study we find the answer to our every need (in Christ).

A. **THE SIZE** - 2 by 1 by 1 1/2 Cubits

[1]. The Table was large enough to receive all who are worthy to come (all who will enter and desire this inner fellowship); but small enough to exclude all who are not worthy (I Cor. 11:28,29).

B. **MATERIALS** - Shittim Wood, overlaid with gold (humanity and divinity).

C. **CHARACTERISTICS** - Not an ordinary table, there were some peculiarities:

[1]. **THE BORDER**: Perhaps a ledge around the table to hold the utensils.

[2]. **TWO CROWNS**: Of gold - one, kept bread on the Table; second, kept things from falling off the border.

(a). The twice-crowned Lord: once with thorns, and the crown He will wear as King of Kings, Lord of Lords.

[4]. **RINGS AND STAVES**: Used to carry the Table when traveling, it went with them; we have the WORD, which can be taken anywhere we go (Israelites had no abiding place in the wilderness, ever on the march; the Tabernacle was a picture of God's complete provision: Table, food; Candlestick, guidance; Altar of Incense, intercession).

[5]. **VESSELS**: Dishes, spoons for putting incense on the bread; and covers and bowls for the drink offering.

D. **THE SHEWBREAD** - Was that which the priest fed upon, the priests would then be representatives of the people.

[1]. 12 loaves of bread on the Table at all times, two rows of six each.

[2]. (Lev. 24:5-9) The priests would eat the bread once a week (flavored with frankincense), and it was replaced as it was eaten (never a time of no food).

[3]. The basis of our fellowship is Christ, He is sufficient, all we need.

[4]. Feeding and feasting on Christ is not a **SHALLOW ENTERTAINMENT**, but a time of nourishing and strengthening.

[5]. **Unleavened** - Leaven is a type of sin ("no fault in Him "Pilate).

[6]. **Fine Flour** - Of the earth, crushed, not palatable until baked; here is the testing, suffering Christ.

[7]. **"Standing Up"** - There were no chairs for them to sit down, for the House of God is not a **PIECE OF EASE AND ENTERTAINMENT** but the place of **WORK AND SERVICE** (no laziness, no excuses).

## II. THE GOLDEN CANDLESTICK

LAMPSTAND (South) (Exodus 39:37)



25:31-40; 37:17-24;

Here is **TESTIMONY**, giving forth **LIGHT**, a symbol of **CHRIST THE HOLY SPIRIT**, and **THE BELIEVER** Joined together.

A. SIZE AND SHAPE - No size given, but shape and design given in detail (the most beautiful and ornamental piece of furniture).

- [1]. A center shaft with three branches on each side, making seven lamps (Christ is the center Jn.15:5); we are the branches (Matt. 5:14).
- [2]. Estimated weight would be around 100 pounds of gold.
- [3]. Six branches differed from the center shaft;
  - (a). 3 bowls, 1 knop, 1 flower on each branch - the center shaft had 4 of each - also a knop under each set of branches.

[4]. Lamps for oil - usefulness as well as beauty, to give LIGHT.

(a). Tongs, snuffers and snuffdishes for trimming, morning and evening.

B. BEFORE THE LORD - (Exodus 40:25)

[1]. The lampstand is not light before the world, but the world knew that it was alight, when we seek to live for his glory only, the world will say: These men have been with Jesus."

C. THE PERSONAL PRONOUN "HIS" USED OF LAMPSTAND - (refers to Christ).

- [1]. "Beaten of gold" (Is. 53:5,10) - suffering, bruising of Christ.
- [2]. "Beaten olive oil" - The sufferings of the Holy Spirit (Eph. 4:30).

### III. THE ALTAR OF INCENSE - (Center, West) (Ex. 30:1-10,34-38; 37:25-29).

"Before the veil" - **PRAYER AND WORSHIP AND PRAISE.**

Here is **CHRIST** in whose name our prayers must ascend [Matt. 17:5; Eph. 1:6].

How eager we should be to learn how to **PRAY** and to **PRAISE HIM.**

[1]. **SIZE** - 2 by 1 by 1 cubits - just large enough to serve its purpose.

[2]. **MATERIALS** - Shittim Wood, overlaid with gold (Christ makes intercession in Heaven for the believers on **EARTH.**

[3]. **A CROWN** - To keep fire from falling to the ground (fire with incense).

[4]. **HORNS** - As on the Brazen Altar, speak of power and strength - **POWER OF PRAYER.**

[5]. **RINGS AND STAVES** - For travel, prayer is not limited to time and place.

[6]. **PURPOSE** - Shows forth the greater work of the Cross, and **NOW** becomes our **MEDIATOR.**

[7]. **POSITION** - In the Holy Place **BEFORE THE THRONE**, the Mercy Seat; as Christ is now not sitting on a throne, but at the right hand of God.

[8]. **THE INCENSE** - Equal portions of:

(a). **STACTE** - The natural gum of the myrrh tree; myrrh being artificially produced by incisions.

(b). **ONYCHA** - A perfume that was rendered from shellfish types.

(c). **GALBANUM** - Resinous, yellow-brown incense, but it is not known from what plant or tree it was derived.

(d). **FRANKINCENSE** - Resin of the Boswellia tree, which grows 40 feet high in India and Arabia. it has a balsamic smell and bums with a white name and fragrant odor.

## Lesson Seven

### THE ARK OF THE COVENANT, AND THE MERCY SEAT

(Exodus 25:10-22; 37:1-9)



The Outer Court...The Holy Place...**THE HOLY OF HOLIES!!!** We should **STOP** and **REMEMBER** as we **STEP BEHIND THE VEIL** to look upon the **ARK** that this one thing the Old Testament saints were **NEVER PERMITTED** to do. Only on **ONE DAY** in the year, **THE DAY OF ATONEMENT** (Lev. 16: 11,34) did the High Priest enter into the Holy of Ho lies, and then, **ONLY** with the **BLOOD** of propitiation, and a cloud of incense to dim the vision of sinful man in the presence of God.

### I. THE ARK OF THE COVENANT

The most important piece of furniture in the Tabernacle, for it is the most complete type and figure of Christ found in the Old Testament. The Tabernacle was built around the Ark; the Tabernacle without the Ark is like a body without a soul, or a Church without Christ; (Herod's Temple in Jesus' day had no true Ark, thus they crucified Christ).

A. **THE ARK OF THE COVENANT** - "Chest, coffer, for keeping safe" **SAFETY IN CHRIST.**

Several Arks mentioned in Scripture:

[1]. Noah's (Gen. 6:13,14).

[2]. Moses' (Ex. 2,3).

[3]. Ark of the Covenant (Ex. 25:10).

## B. SIZE AND DESCRIPTION

- [1]. **WOOD** and **GOLD**, the blending of two natures, human and divine.
- [2]. **OBLONG-SHAPED CHEST**, 2 1/2 cubits long 1 1/2 cubits high and wide.
- [3]. **CROWN OF GOLD** - Crowns are for kings to wear, thus the crown is a symbol of His sovereignty and power (Lord and Master).
- [4]. **4 RINGS OF GOLD, 2 STAVES** - For the **ARK** when carried by priests (only).  
(4)= Justice and Holiness, Grace and Truth, Propitiation (in middle, between).

## II. THE MERCY SEAT

"Covering (propitiation)" **CHRIST'S BLOOD COVERING OUR SINS.**

Here is **CHRIST** in His mediatorial redemptive work (in Heaven before God).

A. IT WAS SOLID GOLD - 2 1/2 cubits long, 1 1/2 cubits wide.

- [1]. There was **NO SEAT** in the Holy of Holies, no need for one; the priestly work was never finished, constantly and daily they brought sacrifices in the Outer Court: **NO END OF SERVICE.**
- [2]. Only **ONCE** (Heb. 10: 11,12) is it mentioned that Christ could **SIT DOWN**, and only after His work is finished, and nothing to add to His work.

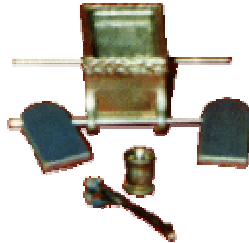
B. TWO CHERUBIMS - "Guardians"

- [1]. A sinner (or a believer) is never called on to **GUARD THE BLOOD**, for he ever stands in need of the blood to protect and guard him.
- [2]. **CHERUBIMS** last seen in Eden (Gen. 3:24) to guard the way to the Tree of Life; at **EDEN** it was **JUDGMENT**; at the **ARK** it is **MERCY**, blood makes the difference.
- [3]. **NOTE:** The two are facing but not looking at each other, but toward the Mercy Seat and the Blood; men deny the power of the blood, but the **WORD OF GOD COVERS IT**, guards it, protects it.

C. BLOOD - "Blood of bulls and goats"

- [1]. Were only types and figures, for these could not pay the price of sin: this was only done by the **LAMB OF GOD** (Heb. 10:1-4:12). In (Heb. 9:12) Christ sprinkled His blood upon the mercy seat before the throne of God, and forever settled the sin question.
- [2]. The difference in "Touch Me Not" (Jn. 20:17) and "Handle Me and See" (Lk. 24:39) is sometime during the Resurrection Day He went to Heaven, fulfilled the **TYPE** of presenting His blood, and thus could say that night, before His apostles, "Handle Me and See".

### III. INSIDE THE ARK - "Thou shalt put into the ark" (Ex. 25:16).



Three things listed: (Heb. 9:4)

- [1]. **TWO TABLES OF STONE** (The Law) (Ex. 20).
- [2]. **GOLDEN POT OF MANNA** (Ex. 16:11-33; Num. 11:19).
- [3]. **AARON'S ROD THAT BUDED** (Num. 16: 17: 1-13).

#### A. THE LAW

[1]. The **LAW** which man could not keep, was deposited within the Ark, beneath the Mercy Seat, the type of the **ONLY ONE WHO** did keep the Law perfectly.

#### B. THE GOLDEN POT OF MANNA - "Manna" has three meanings:

- [1]. Hebrew - "What is it" (Ex. 16:15)
  - [2]. Chaldean - "A portion"
  - [3]. English - "Bread" (Ex. 16:4)
    - (a). Food for the Israelites, and Christ is the food for saints (Bread of Life). The world looks and asks: "What is it?" and we can say: "A portion" sent from God.
    - (b). The **MANNA** came: every morning, daily; around the camp, within reach of all: with the dew, keeping it fresh and clean (Holy Spirit).
    - (c). Instructions (Ex. 16) - One day's portion at a time: none were to have surplus: none are to lack anything: the sun cleansed the earth after gathering.
- [1]. All used it (Ex. 16:2,3; Num. 11:8).

#### C. AARON'S ROD - (Num. 16, 17)

The story of these two chapters tells of Korah, Dathan, and Abiram who gathered 250 men of Israel in rebellion against Moses and Aaron: the false accusation was that Moses had overstepped his mark, usurped authority, and

was full of pride in making his brother High Priest - **GOD VINDICATED - AARON'S ROD BUDDER.**

[1]. **THE ROD TEACHES** Compare (Heb. 9:4 to Num. 17:8):

- (a). **BUD** - symbol of life - The resurrection of Christ.
- (b). **BLOSSOMS** - Token of beauty - The Resurrection of Saints (in His image).
- (c). **FRUIT** - Usefulness - Raising of Israel to fill the earth with fruit.

#### IV. **ALONE WITH GOD**

[1]. Three rooms in the Tabernacle; **OUTER COURT** (place of sacrifice); **HOLY PLACE** (place of worship); **HOLY OF HOLIES** (place of communion adoration).

[2]. When God made **ADAM**, He made him as a three room dwelling - **BODY, SOUL, SPIRIT** (I Thess. 5:23) - This was the **IMAGE OF GOD** in man.

[3]. **THE SECOND ADAM**, Christ, was three rooms - **BODY, SOUL, SPIRIT.**

[4]. **THE SAVED TODAY ARE THE TABERNACLE OF GOD** - (2 Cor. 5:1).  
**THREE ROOMS:**

- (a). **BODY**- Court (Kitchen)
- (b). **SOUL** - Holy Place (living room, fellowship)
- (c). **SPIRIT** - Holy of Holies (secret place)

[5]. **ONLY ONE PERSON** was allowed to enter the Holy of Holies, the High Priest - **ALONE - ALONE WITH GOD!!!**

#### **HOW MUCH TIME DO YOU SPEND ALONE WITH GOD?**

- (a). Too much time spent in the kitchen ministering to the body?
- (b). So busy in the living room, fellowshiping with each other?
- (c). So busy teaching, serving, preaching, we neglect the secret place - **ALONE WITH GOD?**
- (d). Spirituality is not measured in how long you have been saved, member of the church, or even how busy you are in church work.
- (e). Service and worship will be acceptable only as we spend time **ALONE WITH GOD!**

#### **BEHIND THE VEIL - ALONE WITH GOD!!**

(Heb. 4:16)

## Lesson Eight

### THE HIGH PRIEST AND THE PRIESTHOOD

(Exodus 28,29)



In the days of the Tabernacle, **ISRAEL** was divided into three classes: **THE HIGH PRIEST, PRIESTHOOD,** and the **CONGREGATION** (of people).

#### I. THE PRIESTHOOD

The necessity for the appointment of priests lay in the fact that the people were sinners, and as such, could not come before God.

[1]. The object of the priestly office was to minister unto God (Ex. 28:1) on behalf of the people (Heb. 5:1,2).

[2]. All believers are now priests - (I Pet. 2:5,9; Heb. 10), for Aaron was a type of Christ - when seen alone; and a type of the believer when seen with his sons).

#### A. THE CHOICE OF AARON and HIS SONS was PURE GRACE -

[1]. Aaron was not chosen on the ground of any merit in himself; he certainly had no claim on God for such an honor, but God gave it to him.

(a). Note: (Ex. 28:1) - "Take...Him", we also see command;

(b). Not a question asked, but rather a command.

(c). Not "Ask Aaron if he would mind filling the High Priest's once".

(d). God has the right to speak like this, He is the Creator, Redeemer.

(e). God has paid for us, and He can dispose of His property in any way His will so pleases...we are **SERVANTS!**

[2]. Paul and James both describe themselves as "**BONDSLAVES OF JESUS CHRIST**".

- (a). It is not a question of whether it is convenient to do God's service, or whether the particular service He gives us is according to our taste.
- (b). We are to accept it in **SUBJECTION** and **OBEDIENCE**.

[3]. Would we have chosen **LEVI'S FAMILY** to occupy this place of honor.

- (a). Jacob said of Levi (Gen. 34:30) - "troubled me ...stink...".
- (b). If the tribe of Levi had to be perfect they would have never been chosen (nor any of the tribes).
- (c). If God demanded some standard of fitness on our part to be eligible for salvation, none of us could have been saved.

## **B. THE LEVITES**

While the priesthood was formed out of men of the family of Aaron only (his sons were: Nadab, Abihu, Eleazar, and Ithamar; they succeeded Aaron as High Priest); the other families of the tribe of Levi were called to take their place alongside the priestly family:

- [1]. **MERARI** (Num. 3:36) - Had charge of the heavy boards, sockets, basic structure of the Tabernacle - representing the foundation workman of the church today, in the Evangelist (Eph. 4:1).
- [2]. **GERSHOM** (Num. 3:25) - Had charge of the hanging which separated the various parts of the Tabernacle - the counterpart of work of Pastors (shepherds) to mark the lines between believers and the world.
- [3]. **BOHATHITES** (Num. 3:31) - Had responsibility of carrying the holy vessels or furniture - the Teacher would answer to his work.
- [4]. **NO WOMEN** were given service in the Tabernacle (no women were moved by the Holy Spirit to write the scriptures, or any interpretation of them; or head any church). Christianity has given women an honored place as the mother, wives, and sisters of men of God; but God only calls men to this service.

## **C. THE PRIESTS**

- [1]. **CLEANSED** (Ex. 29:4) - This ceremonial bath never had to be repeated (Titus 3:5) - this is a picture of the new birth, (Jn. 13:10).
- [2]. **CLOTHED** (Ex. 29:5-9) - Distinguished from the rest (I Pet. 2:9).
- [3]. **CONSECRATED** (Ex. 29:10-25) - Set apart to service to God "bloodmark", (Ex. 29:20).
- [4]. **CARED FOR** (Ex. 29:26-37) - Physical needs to be provided.

## II. THE HIGH PRIEST'S GARMENTS

These seven holy garments are a type of the **NATURE** and **CHARACTER** of Christ, reflecting his glory and beauty.

A. THE "COAT" (Ex. 28:39) - A long garment worn next to the person, made of fine linen.

B. THE LINEN BREECHES (Ex. 28:42) - "From the loins to the thighs".

C. THE "ROBE OF THE EPHOD" (Ex. 28:31 -35) - A long seamless garment made of blue linen.

[1]. Blue - The divinity of Christ.

[2]. Linen - Spotless righteousness of Christ.

[3]. Pomegranates - symbol of fruitfulness.

[4]. Pomegranates of blue, purple, scarlet, alternating with golden bells along the hem.

[5]. Bells - symbol of testimony.

D. THE EPHOD (Ex. 28:5-12) - The most important part of his dress, distinctively the symbol of the high priest's office.

[1]. Fine Twined Linen (Christ's purity) with gold (deity): blue (heavenly, divine); purple (royalty); scarlet (sacrificial work).

[2]. Means: Son of God/Son of Man, our risen and glorified High Priest.

[3]. Consisted of two pieces (front and back) united at the shoulders with onyx stones in gold, twelve tribes engraved on the stones.

(a). Shoulders are a place of strength, of power.

(b). Stones represent the burden carried on shoulders of the High Priest.

(c). Christ so bears us up to God (Lk. 15:5).

E. THE GIRDLE (Ex. 28:8) - Speaks of service (Mk. 10:45; Heb. 8: 1,2).

F. THE BREASTPLATE (Ex. 28: 15-29) - And inseparably connected with His power and His love.

G. THE MITRE (Ex. 28:36,37) - Or "turban" of fine linen to cover the head bearing upon the front a gold plate engraved "**HOLINESS TO THE LORD**".

[1]. This symbolizes obedience to a higher order.

### III. THE PRIEST'S GARMENTS

[1]. Wore only the linen coats, girdles, bonnets, and breeches.

[2]. When Aaron went within the Holy of Holies on the yearly Day of Atonement for the sins of the people, he wore only the linen priestly garments; when he returned he put on the Ephod, etc., before appearing before the people.

### IV. THE BREASTPLATE OF JUDGMENT - (Ex. 28:10-13)

[See Graphic for Tribe name and description](#)

### V. BELIEVER-PRIEST TODAY

[1]. Each believer is a priest today (I Pet. 2:5,9) and as such has access by Jesus Christ to the very throne of grace. There is no distinction as to the position and privilege of believers. The weakest child of faith is as fully in Christ as the oldest veteran, and just as much a priest.

## Lesson Nine

### THE CONTRIBUTIONS OF THE PEOPLE

(Exodus 25:1-9,31: 35:21-29; 36:1-7)

**THE TABERNACLE** is a type of the **CHURCH** - the place where **CHRIST DWELLS** (dwelling in the believer - (I Cor. 3:16). Therefore, certain details describe the Church and its work.

#### **A. ACCORDING TO PLAN**

The Tabernacle was built according to the plan given by God, His pattern.

[1]. It was planned, not by the mind of man, but by wisdom and foreknowledge of God.

[2]. Nothing was overlooked, everything was included in the planning.

[3]. There was to be **NO DEPARTURE** from this plan, even in the smallest detail (pin, cord, socket, badger skins, etc.)

[4]. If any church today is not according to the pattern - **IS IT A TRUE CHURCH OF THE LORD JESUS CHRIST?**

#### **B. NO NON ESSENTIALS IN THE TABERNACLE**

There was nothing superfluous, nothing extra, nothing non-essential.

[1]. It would be an insult to God to consider **ANY PART** as not necessary.

[2]. We are to follow God's pattern, not follow after traditions or man made ideas, nor let sentiment or feelings move us.

[3]. To change God's plans to suit our fancy, or to fit our advanced (liberal) thinking is to deny God's will and purpose for His Church.

#### **C. ALL THE WAY - TO THE END OF THE JOURNEY**

It was the same kind of Tabernacle at the **END** as it was at the **BEGINNING**.

[1]. Nothing needed to be changed or revised or improved.

[2]. The Church was planned for **ALL THE WAY**, for the **LAST CENTURY** as well as the **FIRST CENTURY**.

[3]. New methods are not needed, we need only to adhere to God's pattern all the way (from the time established by Christ until the Rapture).

#### **I. THE PRIVILEGES AND OBLIGATIONS OF CONTRIBUTING** - (Exodus 25)

God told Moses (Ex. 25:3-7) what materials to use in the Tabernacle.

God told Moses (Ex. 25:2) who should give those materials. The details are:

##### **A. THE CHILDREN OF ISRAEL ONLY, WERE TO GIVE**

[1]. (Ex. 12:38; Num. 11:4) tells us that there was a mixed multitude who left Egypt with the Israelites; but **ONLY** the Israelites were to bring these offerings.

[2]. **THE CHURCH** is to be financed by its **MEMBERS ONLY**.

##### **B. ONLY THOSE WHO WOULD GIVE WILLINGLY**

[1]. (Ex. 36:2) God wants the gift to be from the heart.

[2]. (2 Cor. 9:7) Would you like to accept a gift from a person when you knew it was not given willingly?

[3]. "Cheerful", the Spirit of the Lord wants joyfulness, gladness and delight.

### C. GOD MADE THE GIVING POSSIBLE

[1]. (Ex. 12:36) Israel received the wealth of Egypt on the night of the Passover.

[2]. God saw to it that they received their wages for all the years past of unpaid labor as slaves in Egypt.

[3]. Whatever we have as Christians comes to us from the Lord.

[4]. We are not giving "ours", for we are not our own (I Cor. 6: 19,20).

[5]. We are stewards (Mal. 3:10, robbing God; I Cor. 4:2, faithful).

### B. THE RESPONSE OF THE PEOPLE - (Ex. 30,31,36)

It is estimated that the cost of the Tabernacle was in the millions (materials only).

God's plan of financing will always **WORK**, if God's people will **RESPOND** and follow God's instructions.

#### A. EQUAL AMOUNTS OF SILVER - (Ex. 30:11-16)

[1]. All materials were given by **FREE-WILL OFFERINGS** except **SILVER**.

[2]. Same amount of silver required of each Israelite.

[3]. Our redemption cost something (Christ), and the price is the same amount for every person (all must come by way of the cross).

[4]. Israelite slaves were bought with silver. We are purchased out of the slave market of sin with the blood of Christ.

#### B. GOD GIVEN ABILITIES FOR SPECIAL SERVICE - (Ex. 31:1-6)

[1]. **BEZALEEL** - "In the shadow (protection) of God" (Psalm 57:1).

(a). Son of Uri - "Light" (I John 1:5).

(b). Grandson of Hur - "Free, Liberty" (Heb. 10:9).

(c). Tribe of Judah - "Praise" (Ps. 40) headed the march.

(d). Filled with the Spirit of God in wisdom, and understanding, and knowledge, and all manner of workmanship (Is. 1 1: 1-4; Eph. 2: 10).

(e). Work in gold - "Divine Glory" (type used throughout the Tabernacle).

(f). And in silver - "Redemption"

(g). And in brass - "Judgment"

(h). In cutting of stones - (breastplate, people of Israel).

[2]. **AHOLIAB** - "Tent of the Father" (I John 1).

(a). Son of Ahisamach - "Brother of Support" (Heb. 2:9- 1 1).

(b). Tribe of Dan - "Judge", brought up rear of the march.

#### C. OVERABUNDANT RESPONSE OF THE PEOPLE - (Ex. 36:4)

[1]. God's plan of financing works well, it worked so well that the people were "restrained" from giving.

[2]. When the Tabernacle was finished there were no mortgages, no notes, no payments.

[3]. We must give Israel the credit that is due - they were rebellious at times, murmured and complained, but they **GAVE**.

[4]. They were homeless, without incomes, with no outlook (humanly speaking), had come hundreds of miles and didn't know how much farther they

had to go; nor what their future needs would be (answers about every excuse we can have - eh?).

[5]. **THEY GAVE THEIR SHOES** (Ez. 16:10).

(a). Badger skins were used for shoes, so God literally asked them for their shoes, off their feet.

(b). And they **GAVE THEM WILLINGLY, HEARTILY.**

(c). Because of their willingness, God made their shoes to last for the 40 years (Deut. 8:4; 29:5).

[6]. **THEY EVEN GAVE THEIR LOOKING- GLASSES** (Ex. 38:8)

(a). The Laver was made of the brass given (polished brass used by the women as "mirrors).

(b). Offering or Sacrifice?

(c). We, too, must sacrifice that which would minister to our pride if we are to obtain the cleansing (Laver) which fits us for fellowship (Tabernacle) with God.

**WHAT A TESTIMONY!!!**

(d). Not a struggle and push to barely get enough, but there was **TOO MUCH.**

(e). Their secret - from overflowing hearts, **FAITHFUL AND OBEDIENT!!!**

## Lesson Ten

### THE GLORY OF THE CLOUD (Exodus 13:21,22; 40:33-38)



God's purpose in giving the instructions for building the **TABERNACLE** is stated plainly in (Ex. 25:8) - **"THAT I MAY DWELL AMONG THEM."**

[1]. This has been God's desire since the Garden of Eden (Gen. 3:8).

[2]. It is seen in God's relationship with Enoch (Gen. 5:21-24); with Abraham (Gen. 12: 1-4); with Moses (Ex. 33:11); and with the Twelve (Mark 3: 14). God made man in His image that He might have fellowship with man, and His great heart of love is not satisfied apart from this fellowship.

[3]. **THEREFORE:** when the Tabernacle was finished and the furniture was all put in place according to the pattern and plan given by God - **A CLOUD OF GLORY SETTLED DOWN** that they would know that this was **GOD'S DWELLING PLACE ON EARTH.**

A. **THIS CLOUD FIRST APPEARED** when the Lord led the Children of Israel out of Egypt (Ex. 13:21,22).

[1]. When Pharaoh pursued them the **CLOUD** went behind them and stood between them and the Egyptians (Ex. 14:19,20).

[2]. The Egyptians perished in the Red Sea, and the **CLOUD** led the Children of Israel to Sinai, and abode there during the time Moses was on the Mount receiving the Law (Ex. 14:24; 40:38).

[3]. Then when the Tabernacle was finished and all things in order the **CLOUD** covered it (Ex. 40).

[4]. The **TEST** of all service is **OBEDIENCE.**

[5]. The Lord has given certain directions to Moses, therefore, when finished only one question did it correspond with the instructions?

[6]. Chapter - 39:1, 5, 7, 21, 26, 29, 31, 42, 43 - **TEN TIMES.**

[7]. Chapter - 40:16, 19, 21, 23, 25, 27, 29, 32 - **EIGHT MORE TIMES.**

B. **TO OBEY IS BETTER THAN SACRIFICE** (I Sam. 15:22).

## I. THE GLORY CLOUD, AND THE TABERNACLE, AND THE ISRAELITES -

Unique and distinct features about the **CLOUD**:

### A. A PILLAR - (Ex. 13:21,22)

[1]. Pillar of **CLOUD** - to lead by **DAY**.

[2]. Pillar of **FIRE** - to give light by **NIGHT**.

[3]. When night began to fall in the late afternoon the Pillar of **CLOUD** would gradually transform into a Pillar of **FIRE** - what an awesome sight it must have been, and yet a glorious sight!

### B. SIGNIFIED HIS PEOPLE - (Ex. 40:34,35)

[1]. "The glory of the Lord filled the Tabernacle".

[2]. The repetition here is interesting, it calls to our attention that the Lord was there **FILLING** the Tabernacle, thus these were **HIS PEOPLE** (2 Cor. 6:16).

### C. THE CLOUD WAS A GUIDE AND PROTECTOR

[1]. The Israelites were going into an unknown land - how would they be guided and protected?

[2]. The **CLOUD** went **BEFORE THEM**, and stood **BEHIND THEM** - to lead and protect: The Israelites were led to safety and blessing, and the Egyptians to destruction.

### D. THEY MOVED OR STAYED WITH THE CLOUD

[1]. The **CLOUD** regulated all the movements of the Children of Israel.

[2]. At the command of the Lord, the Children of Israel journeyed, and at the command of the Lord they pitched the Tabernacle (Num. 9:17-23).

[3]. "Whether two days, month, or a year..." what **SUPREME AUTHORITY AND POWER** on God's part; and **OBEDIENCE AND DISCIPLINE** on the part of the Israelites.

[4]. There was no opportunity for an individual Israelite to move in independent action apart from God's command.

[5]. The **PEOPLE DID NOT CHOOSE** the journey, when to march, or when to halt, or to march at sunrise or at midnight; nor choose the place to camp - by water in the desert - **NO CHOICE AT ALL - THE CHOICE WAS GOD'S**.

### E. THE CLOUD SEPARATED THEM

[1]. The **CLOUD** was the evidence and seal of the Lord's presence with the Children of Israel and separated them from all other peoples (Ex. 33:14-16).

[2]. Even Egypt could not come near them (Ex. 14:19, 20).

### F. THE CLOUD NEVER LEFT THEM (Ex. 13:22) -

[1]. The **CLOUD** never left the Children of Israel in their wilderness.

[2]. Before Pentecost the Holy Spirit came upon men, but never took permanent abode; but now, we have the Spirit of God never to be without Him (Eph. 4:30).

## II. THE GLORY CLOUD AND TODAY - (I Cor. 10:11 and Rom. 15:4)

[1]. The **TABERNACLE** and the **GLORY CLOUD** were not merely historical facts alone; but examples and foreshadows of greater truths.

[2]. **GOD'S PRESENCE IN THE CHRISTIAN TODAY** - (1 Cor. 6: 19; 3: 16,17) 1).

### A. THE CLOUD WAS A SYMBOL OF THE HOLY SPIRIT

(And the written Word) by and through whom the Lord would manifest Himself to, in, on, and with the believer in this present age (John 14:16-18; Matt. 28:20; Acts 2:3; John 16:13-15; Rom. 13: 12; 1 Cor. 2:4; Rom. 8:11).

### B. THE BELIEVER MUST GIVE ACCOUNT

[1]. For the way in which we have submitted to the Holy Spirit and His rule over our lives.

[2]. We are responsible for this - permitting the Holy Spirit to rule.

[3]. We make excuse too often and too easy for ourselves, and are quick to accuse others.

[4]. We are not our own, but God's. To pursue our own way, making money, raising families, indulging in things pleasing to the flesh, and to ignore the Lord's authority is to put ourselves in danger (I Cor. 9:27; Heb. 12:6).

### C. GOD DESIRES A GLORY CLOUD TODAY

Which will make men take notice that He dwells in the world that is, in us (I Pet. 2:9)

[1]. God's supreme objective in the believer's life is to be **FILLED WITH THE SPIRIT**, the **LORD'S GLORY** (Eph. 5:18).

[2]. The **SPIRIT - FILLED** (possessed) **LIFE** is the **NORMAL LIFE FOR THE BELIEVER**.

[3]. Will bear **FRUIT** (Gal. 5:22,23) - what a cluster!

[4]. In relation to God - love, joy, peace.

[5]. In relation to our fellow man - longsuffering, gentleness, and goodness.

[6]. For our individual Christian life - faith, meekness, temperance (control).

[7]. We can block the purpose of the Spirit in our lives

(a). Grieve the Spirit (Eph. 4:30) by refusing His leading.

(b). Lie to the Spirit (Acts 5:3-4) in matters of consecration and service.

(c). Quenching the Spirit (I Thess. 5:19) - lost power by unfaithfulness, disobedience, critical spirit, resisting His fire in us.

**OTHERS MAY....BUT I CANNOT!!!**